



INSTALLATION INSTRUCTIONS

Inner Fender Eliminator Kit

1TP-F16E0-V0

XVS95CE (Bolt)



DEALER OR INSTALLER:

These instructions contain important information for future reference and *must* be given to the customer.

⚠WARNING

Read and understand these instructions completely before installation to avoid possible injury, as well as possible damage to the accessory or vehicle.

WARRANTY INFORMATION:

Genuine Star Accessories are covered by a one-year limited warranty against defects in material or workmanship. Labor for replacement of defective components is not covered. See your Yamaha dealer for a copy of the warranty statement.

PARTS LIST:

This kit contains the following components. Before beginning installation, confirm there are no missing or damaged components.

Item	Part Number	Description	Qty
--	1TP-F16E0-V0	Inner Fender Eliminator Kit (License Bracket Kit)	--
①	*	Bracket, License	1
②	*	Bracket, Reflector	1
③	*	Bracket, Right	1
④	*	Bracket, Left	1
⑤	*	Bracket, Guide Wire	1
⑥	*	Rear Reflector Assembly	1
⑦	*	Countersunk Flat Head Screw (M6 x 16mm)	4
⑧	*	Bolt, Socket Button (M6 x 6mm)	1
⑨	*	Bolt, Socket Button (M6 x 12mm)	2
⑩	*	Washer, Plain (M6)	6
⑪	*	Nut, Nylon (M6)	6
⑫	*	Pin, Set Screw	2
⑬	*	Grommet	2
⑭	*	Band, Zip Tie	2

* Part supplied with kit only and not available separately.

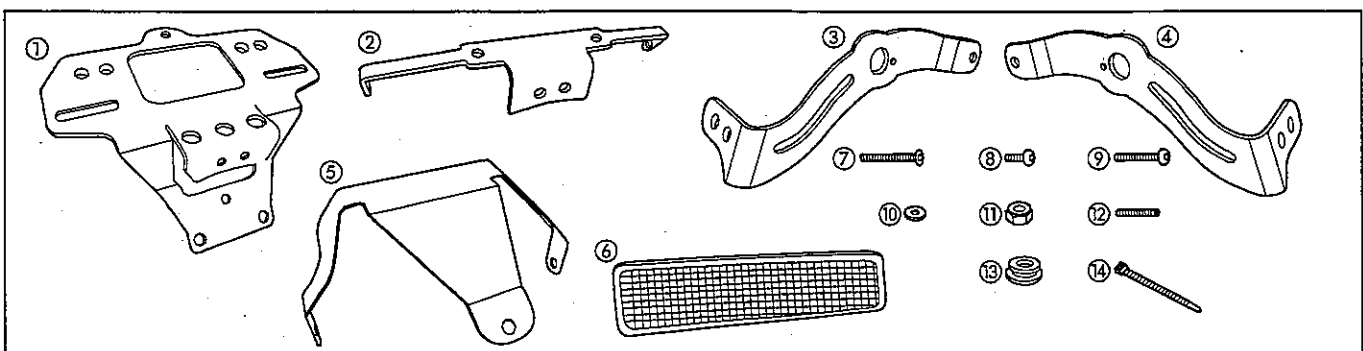
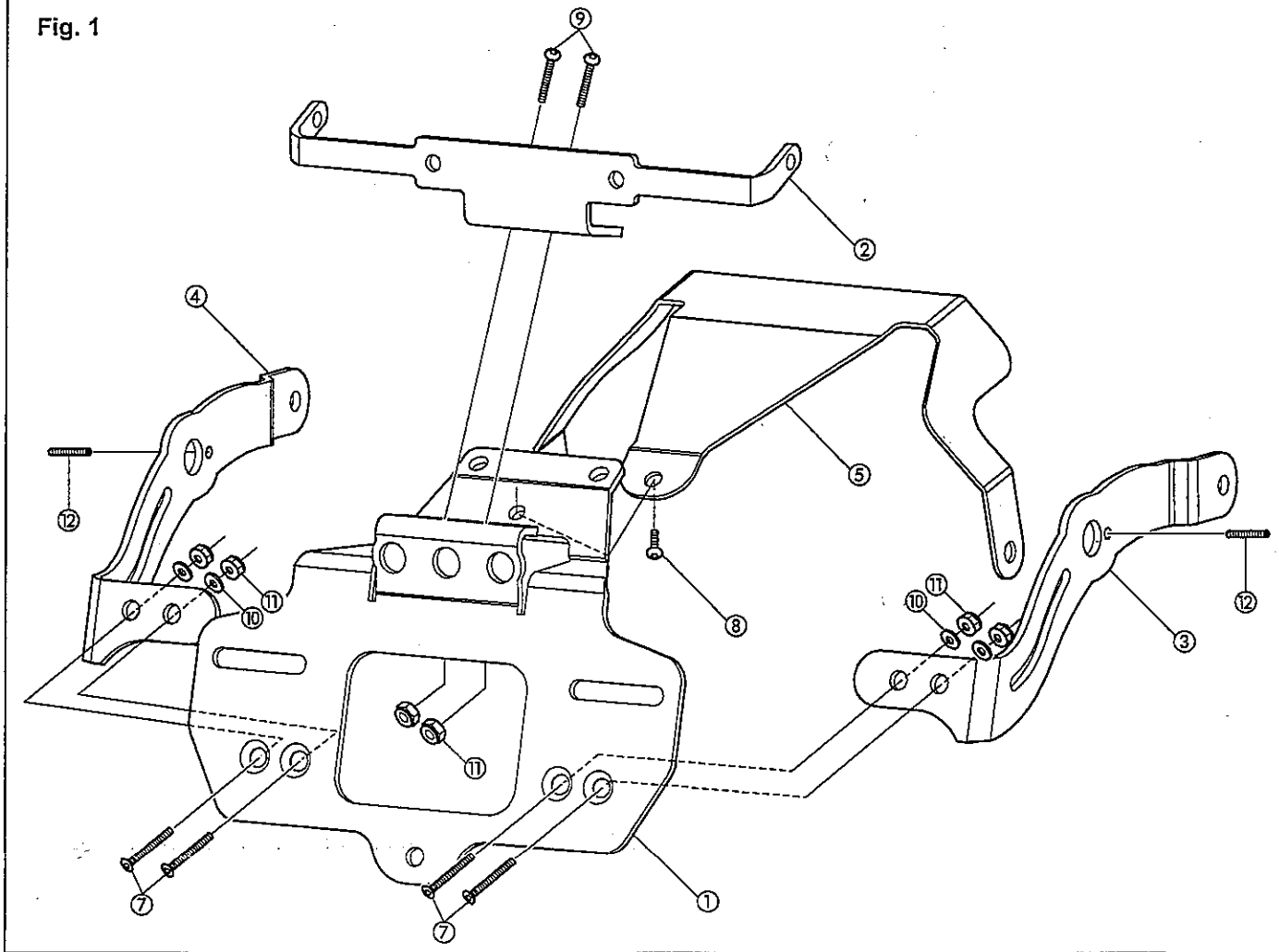


Fig. 1



PREPARATION

1. Loosely assemble the Inner Fender Eliminator Kit as shown (Fig. 1). Tighten the bolts (9) and nuts (10) securing the reflector bracket (2) to the license bracket (1). Torque to 10 Nm (1.0 m•kgf, 7.2 ft•lbf). Do not tighten the rest of the hardware until the assembly is installed on the fender.
2. Place motorcycle on a secure and level surface.
3. Clean all mounting surfaces before beginning installation.

INNER FENDER REMOVAL

1. Unlock the left side cover and pull it off. Remove the seat mounting bolt (8mm) while pressing down the front of the seat (refer to Owner's or Service Manual if needed) and remove the seat. Retain the bolt as it will be reused.
2. Disconnect turn signal/license plate light and tail/brake light connectors under the seat (Fig. 2).

3. Remove the two button-head side arm bolts (10mm) at the front of the side arms on each side of the rear fender. Retain the four bolts as they will be reused.
TIP: Have a second person support the rear fender when removing these bolts.
4. Remove the fender and carefully lay it upside down on a soft cloth or other protective surface.

Fig. 2

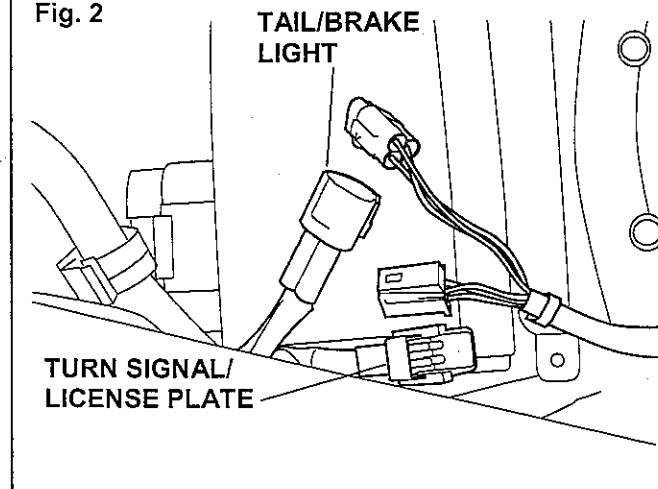
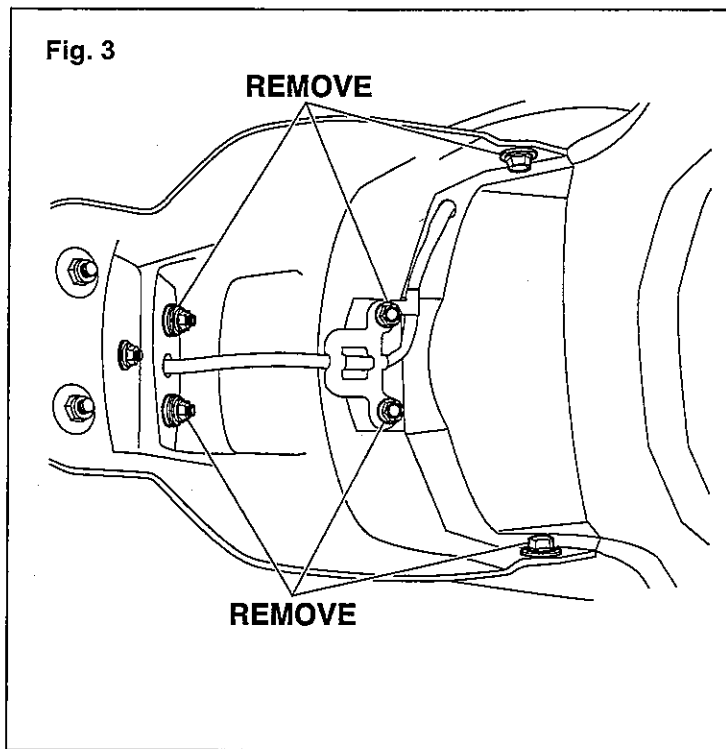


Fig. 3



5. On the underside of the inner fender, remove the two bolts (6mm) and special collar washers on the sides, the two nuts (6mm) from the bracket that holds the license plate light wire, and the two nuts (5mm) that hold the license plate light assembly (Fig. 3). Now remove the two special collar washers and two rubber grommets that mount the license plate light.

TIP:

Store the two special collar washers from the sides, the bolts and retain all other hardware in this step.

6. Move the inner fender slightly out of the way to expose turn signal and license plate light wires and disconnect them.

TIP:

The right-side turn signal connector is black and the left-side turn signal connector is gray.

7. Remove the side arms from the fender by removing four (8mm) side arm bolts. Remove the inner fender and store it. Retain the bolts as they will be reused.
8. Using a 17mm open-end wrench, remove the turn signals from both side arms and retain both turn signals and the two nuts (10 mm).

INSTALLATION:

1. Install the license plate light on the new license plate bracket ① using the retained rubber grommets, special collar washers, and the two nuts (5mm) from Inner Fender Removal step 5 (Fig. 4). Torque the nuts to 3.8 Nm (0.38 m•kgf, 2.8 ft•lbf).
2. Remove rubber bumper for the license plate from the original inner fender and install on the new license bracket ① (Fig. 4).

Fig. 4

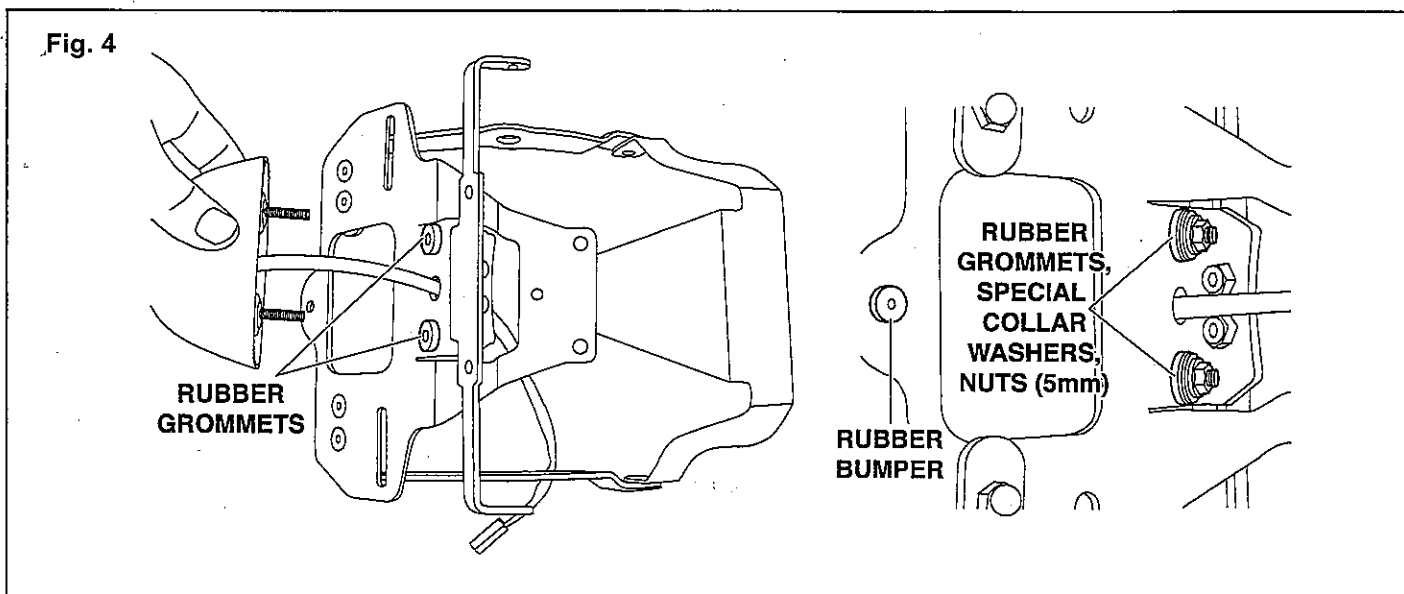
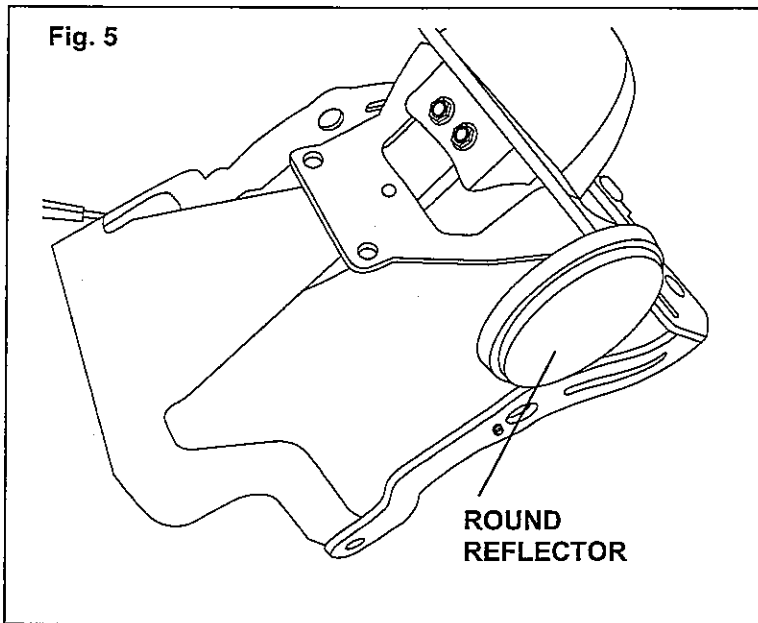
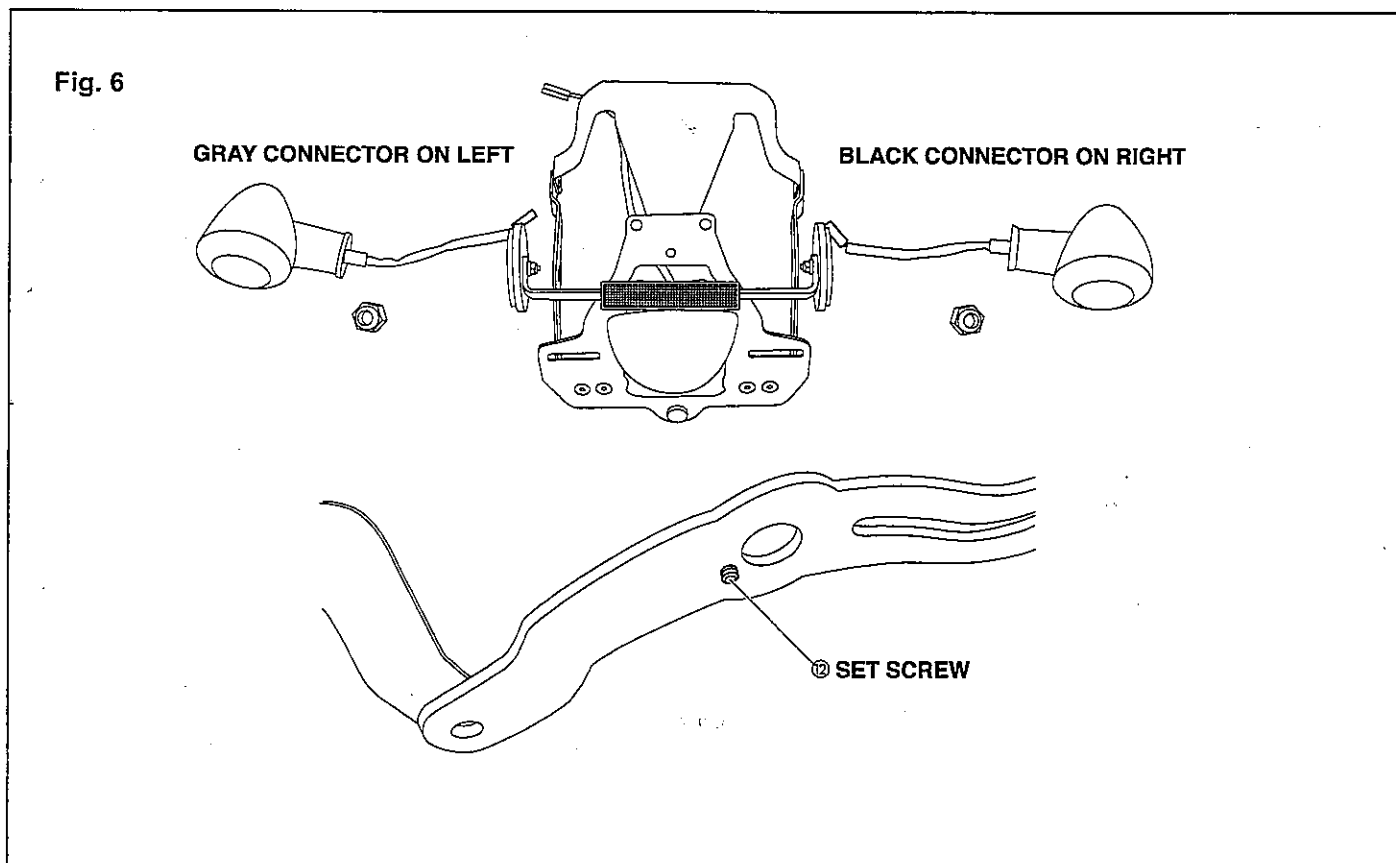


Fig. 5



3. Remove the strip over the adhesive backing on the rear reflector ⑥ supplied with the kit and install to the reflector bracket ② by using the nut from the original inner fender's center reflector. Torque nut to 1.5 Nm (0.15 m•kgf, 1.1 ft•lbf). Store the original reflector.
4. Remove the two round reflectors from the original inner fender by removing the two nuts and reusing them to mount the round reflectors on the ends of the reflector brackets ② (Fig. 5). Torque nuts to 1.5 Nm (0.15 m•kgf, 1.1 ft•lbf).
5. Adjust the small set screw ⑩ installed on the right ③ and left ④ brackets to protrude 3mm (Fig. 6). The screw is used as a locating pin for the turn signals.
6. Mount the turn signals to the new right ③ and ④ left brackets using the two nuts (10mm) and the set-screw locating pins ⑩. The turn signal with the black terminal is on the right side of the motorcycle and the gray terminal is on the left side (Fig. 6). Torque the nuts to 5 Nm (0.5 m•kgf, 3.6 ft•lbf).

Fig. 6



7. Reconnect the turn signal and license plate light wires to the correct connectors on the fender. **NOTICE: Make sure to use the wire foam protectors on the fender so the wires do not get pinched.** (Fig. 7)
8. Position the license bracket assembly over the two studs (6mm) on the fender. Install the two bolts (6mm) on the sides with washers ⑩. Torque to 10 Nm (1.0 m•kgf, 7.2 ft•lbf). Torque the flat head screws ⑦ attaching the license bracket ① to the right ③ and left ④ brackets to 10 Nm (1.0 m•kgf, 7.2 ft•lbf). Tighten the socket button bolt ⑧ holding the guide wire bracket ⑤ to the license bracket ① to 4 Nm (0.4 m•kgf, 3.0 ft•lbf).
9. Use the two nuts (6mm) to secure the license bracket assembly onto the fender studs. Torque to 10 Nm (1.0 m•kgf, 7.2 ft•lbf). Make sure the license plate light wire is properly routed between the bracket and the fender (Fig. 8). Check to be sure all other hardware on the bracket assembly to be sure it is all tightened.
10. Use the two black zip ties ⑨ to secure the turn signal and license plate light wires to the left ③ and right ④ brackets. When each zip tie is fully tightened, cut off any excess (Fig. 8).

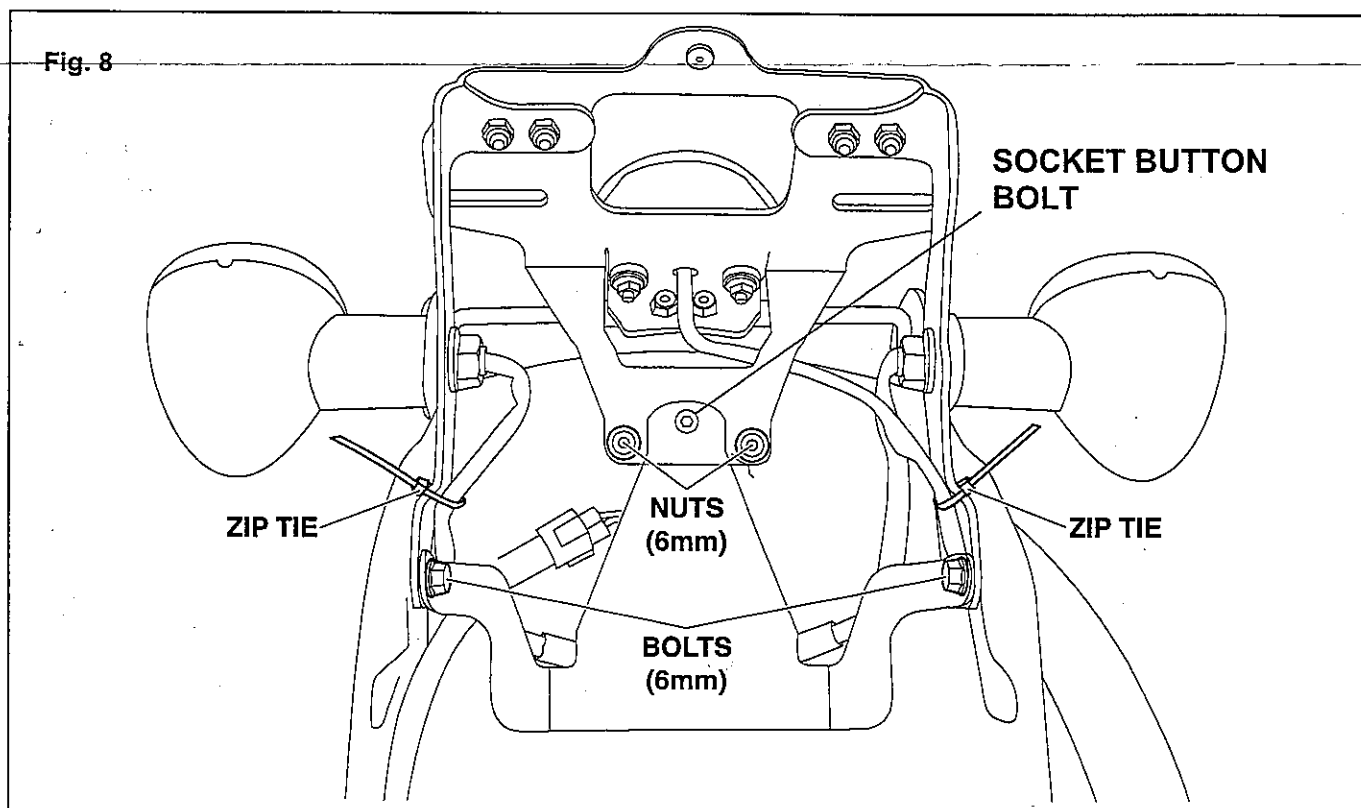
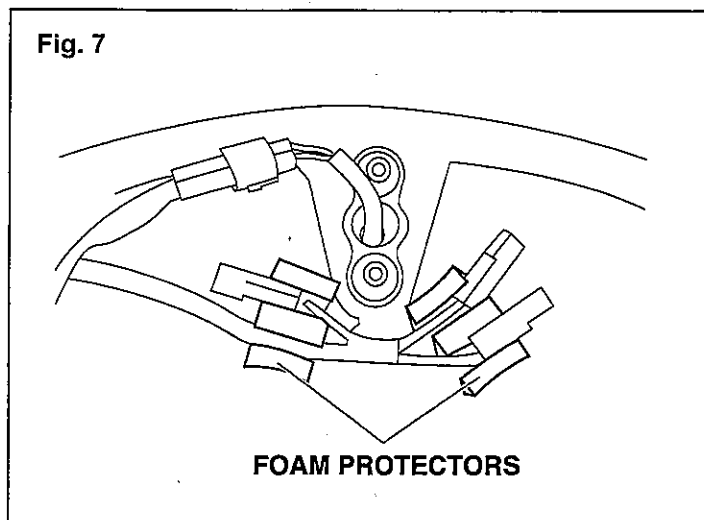
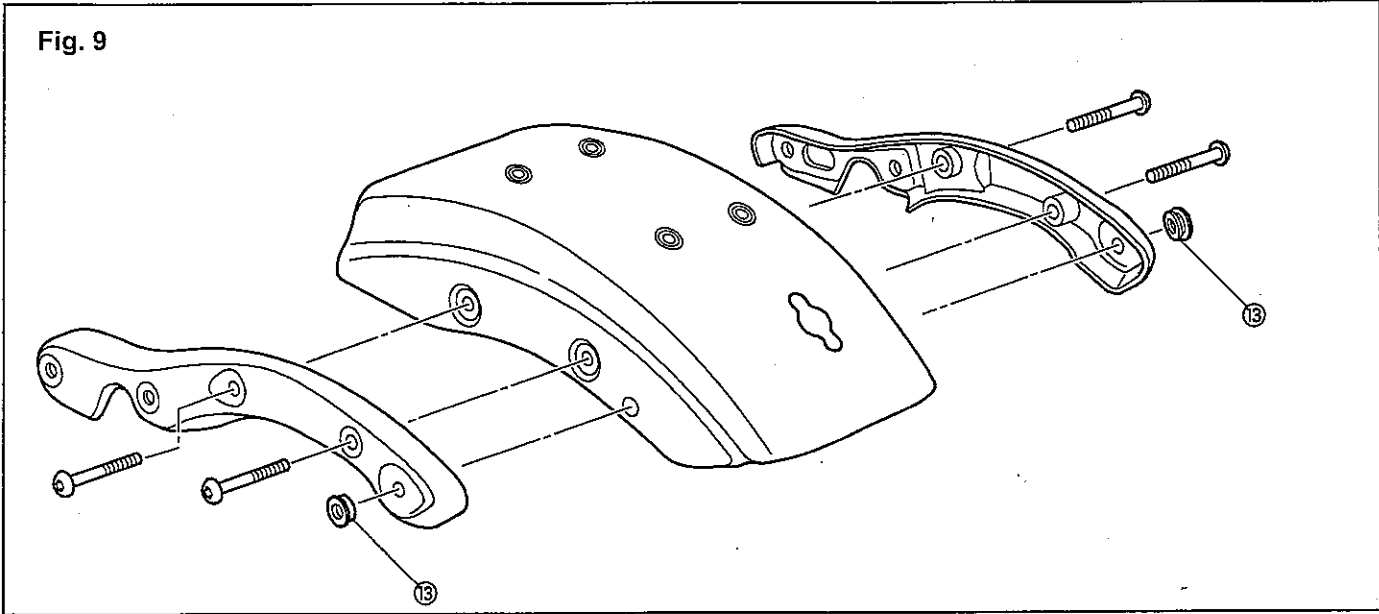


Fig. 9



11. Install left and right side arms back onto fender using the original four side arm bolts (8mm). Torque bolts to 28 Nm (2.8 m•kgf, 20 ft•lbf). Install the two supplied rubber grommet plugs ⑬ into the holes on the side arms where the turn signals were originally mounted (Fig. 9).
12. Reinstall rear fender by using the original four (10mm) button head bolts. Torque bolts to 65 Nm (6.5 m•kgf, 47 ft•lbf).
13. Reconnect turn signal/license plate light and tail/brake light connectors under the seat.
14. Reinstall the seat while pressing down on the front of the seat and you insert the original seat mounting bolt (8mm). Torque bolt to 16 Nm (1.6 m•kgf, 12 ft•lbf).
15. Verify that turn signals, brake and tail light, and license plate light are operating correctly.

MAINTENANCE:

Periodically, check torque on all hardware.

CARE AND CLEANING:

Wash using a mild soap and water solution and a soft cloth.

CUSTOMER SERVICE:

For further information, see your Yamaha dealer.

ESTIMATED TIME TO INSTALL: 0.9 HRS